



LTS SYSTEMS

LTS1000 SERIES SIREN 24V DUAL SPEAKER

REMOTE CONTROLLED

OPERATION & INSTALLATION MANUAL

Operation

The 1000 series remote controlled siren system is controlled by a remote head which can be mounted near the driver. The ON/OFF switch also provides volume control in PA mode. With the power switch in the on position and the sound selector switch in PA position the siren is in PA and stand-by mode, pressing the microphone talk button will activate the PA mode. The mode switch can be left in any sound position and the siren can be switched ON by the power switch and the siren will produce the sound that is selected by the sound selector switch.

If the siren has Radio Re-broadcast function the radio mode can be selected by moving the toggle switch to the Radio position.

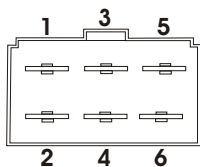
Amplifier Box Mounting

A suitable location can be selected to mount the siren amplifier box, some space for air circulation needs to be provided to maintain cooling for the amplifier box, four mounting holes are provided for this. A 3 meter connection cable to connect the amplifier box to the remote control head is supplied, care must be taken when installing this cable so that it is not damaged by sharp metal edges.

Electrical connections

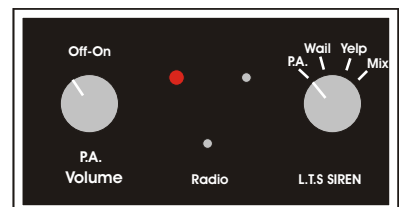
The siren system is supplied with a pre-made 6 pin Female connector which connects to the siren unit. A diagram explaining the pin connections is given below.

Electrical Connections 6 PIN CONNECTOR (Dual speaker models)



- 1- Power (+24V)
- 2- GND (-)
- 3- Speaker 1(+)
- 4- Speaker 1 (-)
- 5- Speaker 2 (+)
- 6- Speaker 2 (-)

FUSE: 20A



REMOTE CONTROL

Note: The above connector originates at the siren box.

Cable Identification

- Power (+) = Red wire
- GND (-) = Black
- Speaker positive = Clear
- Speaker Negative = Clear /with black stripe



Power Cable



Speaker Cable

WARNING

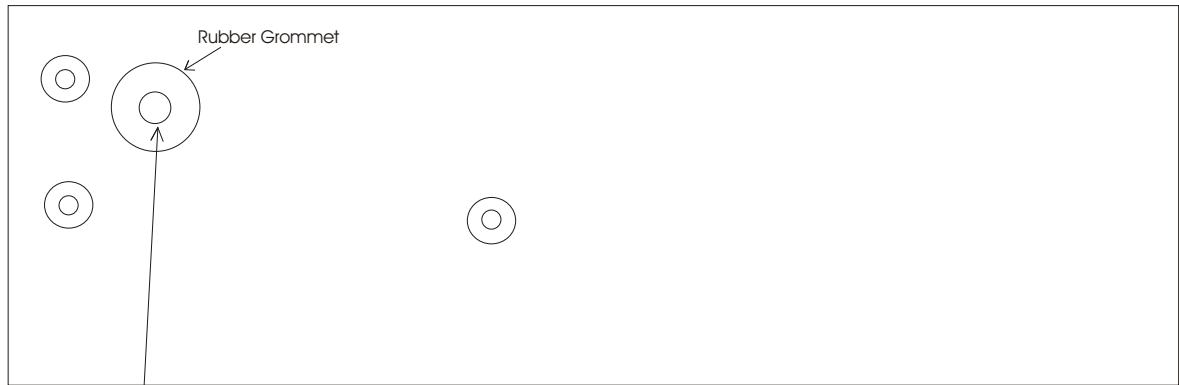
If the system is fitted to vehicle with pre-existing loom please make sure the loom matches the siren loom.

Incorrect wiring can damage the speakers and the amplifier unit.

LTS SIREN, 24V Dual Speaker

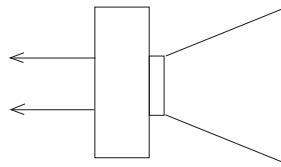
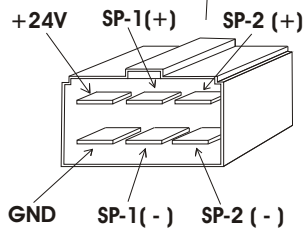
Operating Voltage: +24V

Speaker & Power connection diagram

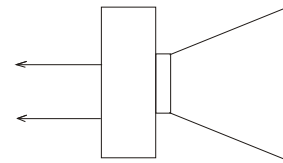


Siren Rear View

FUSE:20A

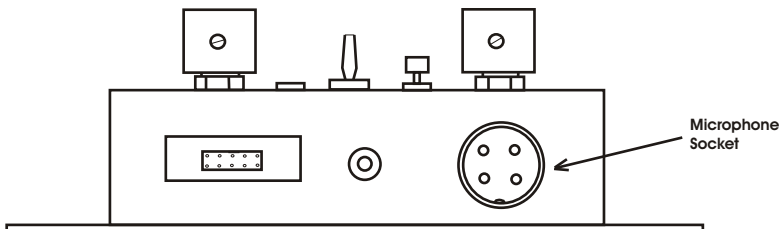


Speaker-1
100Watt/8 ohm



Speaker-2
100Watt/8 ohm

Note: The Hand held microphone must remain connected to the 4 pin microphone socket on the remote control box even if the PA system is not used.



Remote Control Unit

